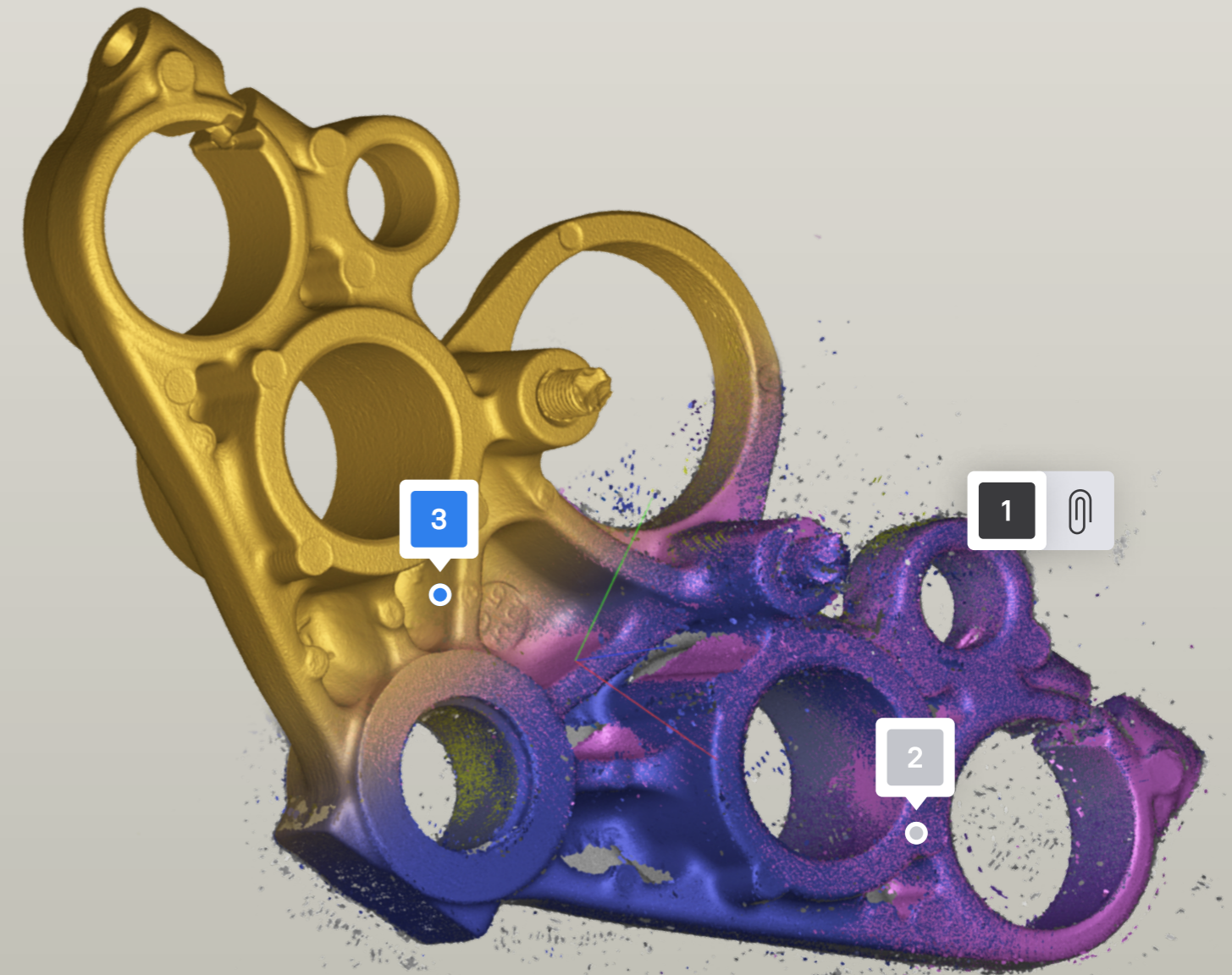


CL-001-09/2021-USD-EN



## OFFICES

---

20 rue des Peupliers  
L-2328, Luxembourg

[info@artec3d.com](mailto:info@artec3d.com)  
[www.artec3d.com](http://www.artec3d.com)

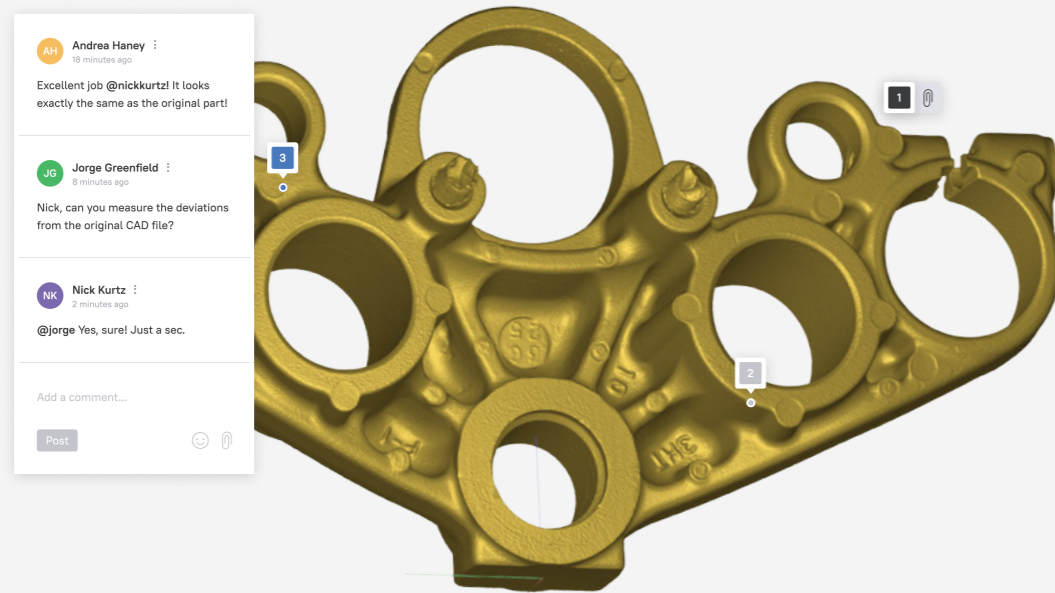
2880 Lakeside Dr. #135  
Santa Clara, CA 95054, USA

Room 1410, 14/F, China  
Merchants Plaza (South),  
333 Chengdu Bei Lu, Jing'an  
District, Shanghai, China

# Artec CLOUD

# ARTEC CLOUD

Share, Process, Collaborate  
3D data on your browser



A collaborative platform for you and your team to access, view, comment on, and process 3D scan data online.

You've always been able to bring your handheld Artec 3D scanners anywhere in the world. **Now, you can take your team with you, too.**



**Access,**  
view, and comment on  
scans and 3D models



**Collaborate**  
with your team and share  
your work, all in one place



**Process**  
data from wherever  
you are

## Stay connected

You, your colleagues, or your clients can upload, view, and discuss scans and 3D models. Or download them onto your desktop for further viewing or processing with Artec Studio.

## Train a team, teach a class

Show your team members how to work with 3D data online, while commenting on their data in real time and advising their next steps.

## Keep up when on the road

With Artec Cloud, you can access and work on scan data captured while you're out on business trips. Being able to process data through your browser on a travel-friendly laptop lets you stay on top of your projects when you are away from your workplace.

## Process scan data, anywhere

All your most frequently used tools from Artec Studio are now accessible to you from your browser for editing, processing, and exporting.

**Connect** to your team while scanning out in the field

**Train** a team or a class

**Review** the 3D scanning jobs you've commissioned

**Work** from home

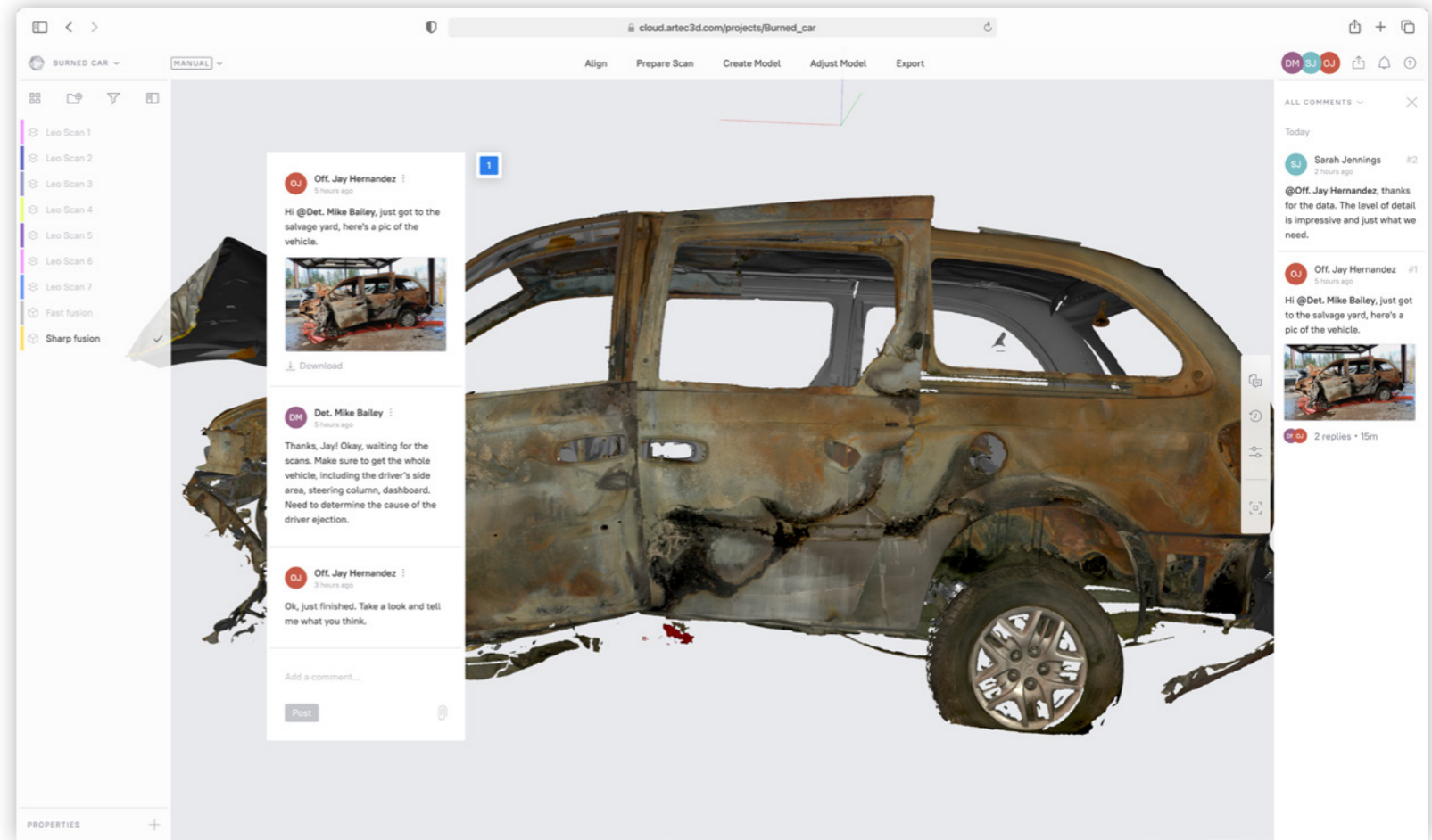
**Travel** without disrupting work

From your browser and from wherever you are – view, collaborate on, and process scan data, all in one place.

**ARTEC CLOUD: IT'S ALL ABOUT TEAMWORK.  
IT'S A NEW WAY TO WORK.**

# ALL FUNCTIONS, EXPLAINED

Choose from one of three plans available to organize, collaborate on, and process your projects. It's like any drive you've used before, but made with your scan data in mind!



## VIEWER

With easy viewing that you'd expect to see in any standard application or program, you'll be able to browse through and find the project you're looking for on any plan.

## COLLABORATION

In Collaboration mode, work on entire projects in one place, making it far easier to coordinate within your team: No more missed messages, messy project management, or poor communication.

Upload scans, leave comments, and have full conversations – you'll even be able to share images with your co-workers for reference or inspiration. If you need to have something scanned, then start a new project on Cloud, upload a photo for reference, and send it to your teammate – they'll be able to receive your task, respond to your message, and get right to work.

## PROCESSING

**Easy processing with the tools you need the most, right on your browser.**

Go all in with this full-access account to process up to 20 projects per month manually or in Autopilot mode. Since you don't have to use up your computer memory, GPU, or CPU, you can process as many as you like at a time.

In manual mode, you're presented with five stages of processing: Align, Prepare Scan, Make Model, Adjust Model, and Export.

With the **Collaboration** and **Processing** accounts, you'll also be able to organize folders and line them up exactly as you need them.

# CHOOSE THE PLAN THAT WORKS FOR YOU

	Viewer	Collaboration	Processing
PRICE PER YEAR	Free	US \$800	US \$1,600
ACCESSIBILITY	Annual, renewed automatically every year	12 months from date of payment	Process 20 projects a month 12 months from date of payment

## 24-HOUR SUPPORT

Get in touch so we can help! With Artec Cloud, you get 24-hour support for anything that you might need help with.

www.artec3d.com  
support@artec3d.com

To cater to the varying needs of yourself, your colleagues, and your customers, Artec Cloud comes in three different price plans: **Viewer**, **Collaboration**, and **Processing**.

Features	Viewer	Collaboration	Processing
View scans and models	•	•	•
Comments. <i>Leave comments including on specific parts of projects</i>	•	•	•
Export. <i>Export scans, models, and Artec Studio projects in a wide range of formats</i>	•	•	•
Create new projects		•	•
Organize projects within folders		•	•
Import projects from Artec Studio		•	•
Import projects directly from Artec Leo		•	•
Import scans and models in a wide range of formats		•	•
Import photographs, videos, and PDF files		•	•
Duplicate projects for further processing and editing		•	•
Share scans, models, and projects		•	•
Utilize key features and algorithms for processing your scan data			•
Edit scans and models manually			•
Edit scans and models on auto mode			•
Processing capabilities			Up to 20 projects per month